



THE HOBBIT

By J.R.R Tolkien

Out of the Frying Pan into the Fire

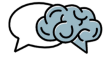


Thank You!

Atlas Aphasia Center is a nonprofit organization.

If this activity helped you, please consider making a donation.
This helps us continue to create free aphasia materials.

<https://donorbox.org/aphasia-materials>



Questions

Characters Introduced

1. Wargs
2. Lord of the Eagles

How did the dwarves feel about Bilbo?

What did Bilbo do when he saw the company again?

How did the company react to Bilbo's surprise?

Why couldn't Bilbo eat?

How did they get down the mountain?

Why did they climb into the trees?

Who do the Wargs work with?

Why wouldn't the Wargs leave?

How did the goblins plan to get the company out of the trees?

Were the dwarves the Eagle's prisoners?



Answers

How did the dwarves feel about Bilbo?

- **They saw him as a burden**

What did Bilbo do when he saw the company again?

- **He used the ring to sneak up on them**

How did the company react to Bilbo's surprise?

- **They were impressed by his skills a a burglar**

Why couldn't Bilbo eat?

- **The goblins had taken all of their food**

How did they get down the mountain?

- **A rockslide**

Why did they climb into the trees?

- **To get away from the wolves/wargs**

Who do the Wargs work with?

- **Goblins**

Why wouldn't the Wargs leave?

- **The company was in their meeting place and they thought they were spies**

How did the goblins plan to get the company out of the trees?

- **They built fires around each tree**

Were the dwarves the Eagle's prisoners?

- **No**